

Quality in Validation – The Quality Compass

Transversal Skills for Work and Life

Paris, France

Workshop, April 19, 2023

Per Andersson, Linköping University, Sweden, and the NVL expert network for validation

nvl.org



Quality in Validation

- *'... the establishment of an environment and the implementation of policies, processes and assessment practices that maximize individuals' opportunities to fully and accurately demonstrate relevant knowledge, skills and competencies (Van Kleef, 2011b)'*

(Van Kleef, 2014, p. 208)

Two sides of the coin



- Flexibility, individualisation, and judgement
- Standardisation, reliability, and measurement



Nordic Quality Compass on Validation of Prior Learning



The Nordic Quality Compass is a toolbox for assessing validation practices, policies, procedures as well as competences of validation practitioners.

This set of tools is for **policy makers** and **developers** of validation procedures as well as for **practitioners** (assessors, counselors and coordinators), who are working with validation of prior learning. All the tools allow you to create and print a development plan as you go. Before you can start using the tools, you must **create your personal account** (Log in, Create new account). You will be able to edit or print your answers at any stage.

Making of quality in validation of prior learning (VPL)

- **Governance** of validation policies and practices
- **Quality assurance** of validation procedures
- **Competence development** of practitioners

qualitycompass.eu

Evaluation tools



Evaluation Tool for VPL Policies and Practices



Evaluation Tool for VPL Procedures and Quality

Self assessment tools



Self assessment Tool for VPL Assessors

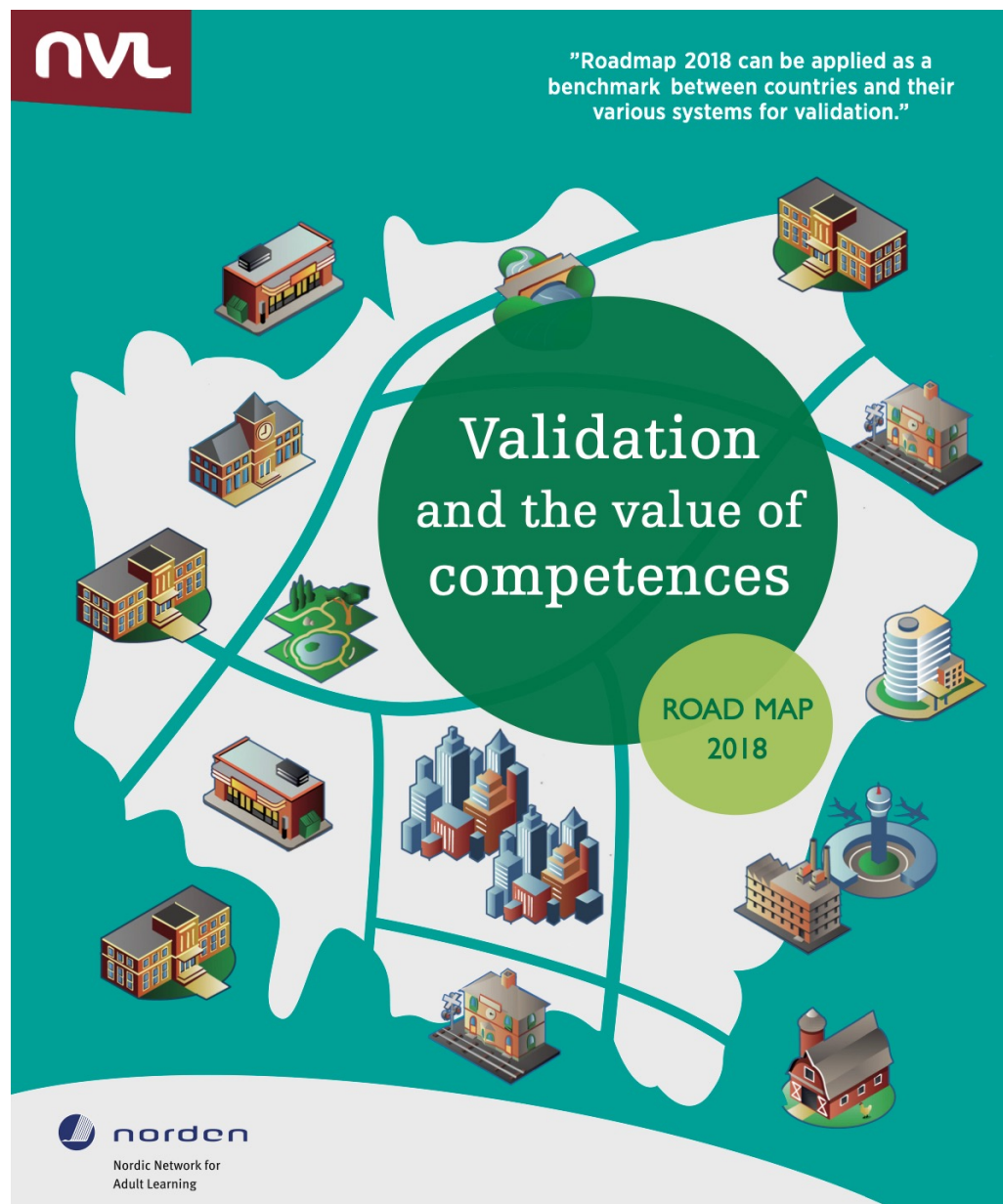


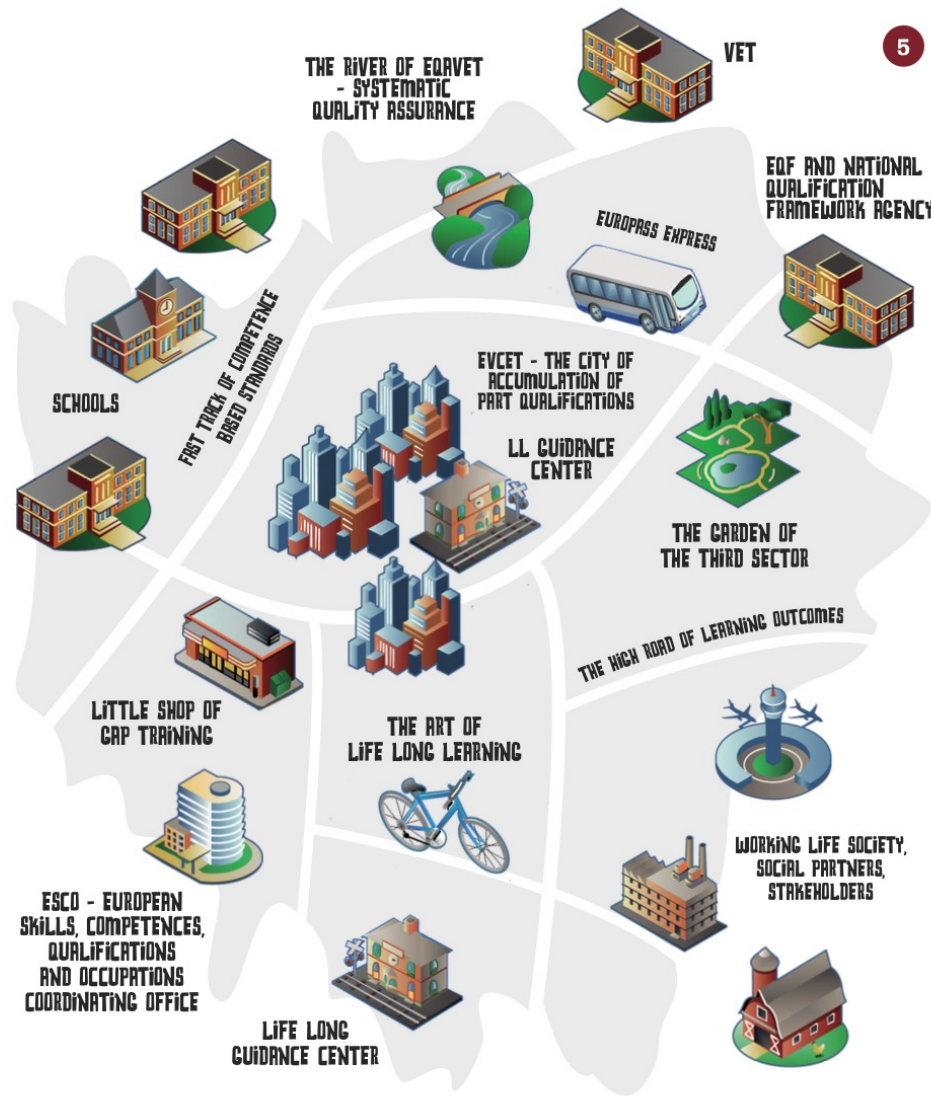
Self assessment Tool for VPL Counsellors



Self assessment Tool for VPL Coordinators

Policies and Practices







Manual

Roadmap 2018 can be used as a checklist to shed light on the status of development in individual countries, but it may also be applied as a benchmark between countries and their various systems for validation. It is a formative document that can be applied and adapted in many different ways. The indicators are grouped in different sections – each starts with an introduction followed by a list of indicators and ends with comments or questions for each section supporting the application of the indicators. The following sections are included:



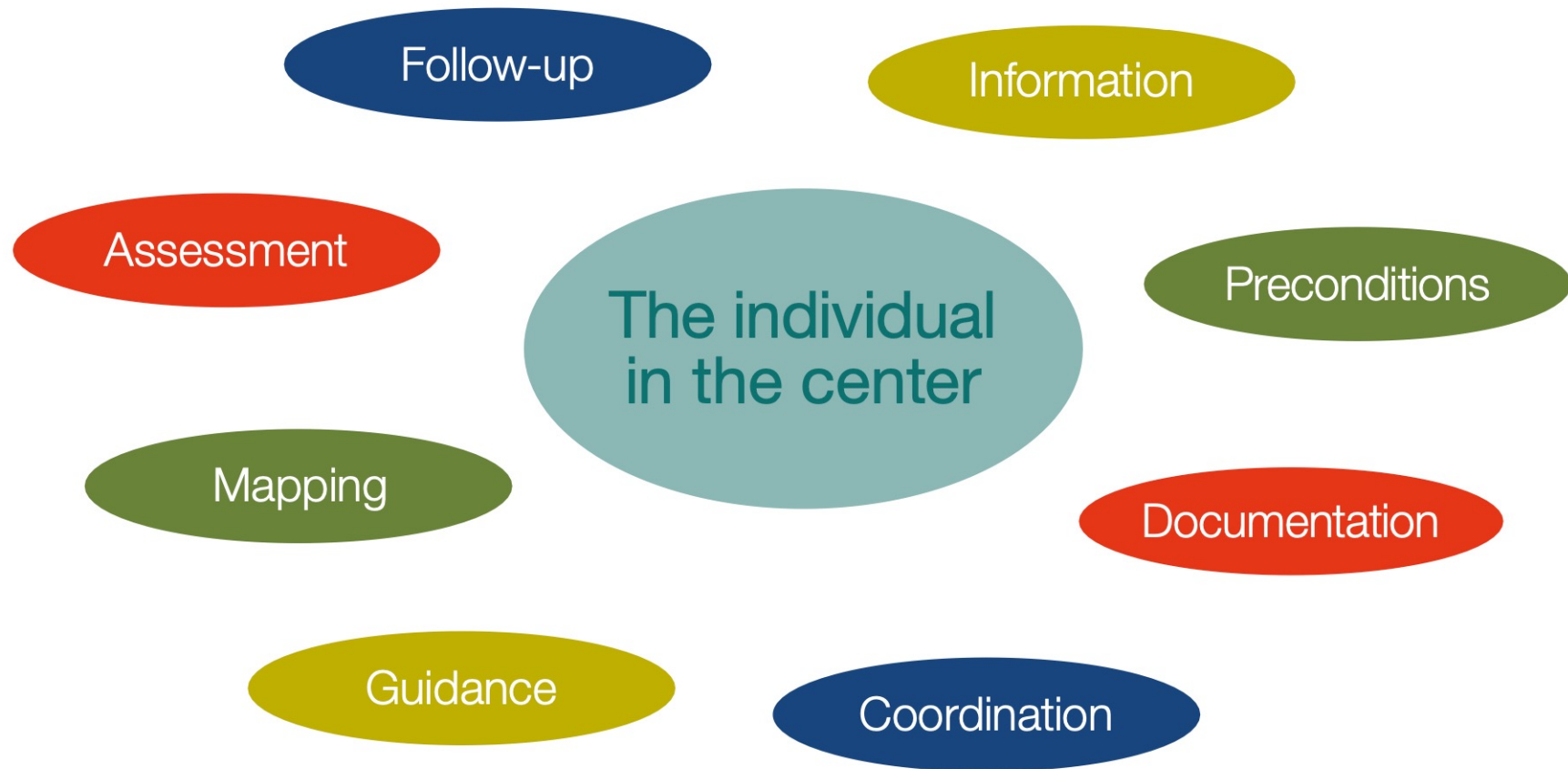
QUALITY MODEL FOR VALIDATION IN THE NORDIC COUNTRIES

– a development project 2012-13



A NORDIC MODEL

for work with quality in validation – a quality assurance model



Nordic Competence Profiles of Validation Practitioners and Competence Development

A mapping project 2014 - 15



Quality model and Competence for Validation

- Quality indicators
- Competence profiles
 - For assessors, counsellors, and coordinators
- For the different phases in the quality model

Indicators for stakeholder participation

Relevant networks and infrastructures for cooperation on VPL are in place.

1

Partly true

2

Completely true

N/A

Not applicable

Social partners, educational leaders, industries and other stakeholders cooperate in designing VPL standards, learning outcomes and qualifications, etc.

1

Partly true

2

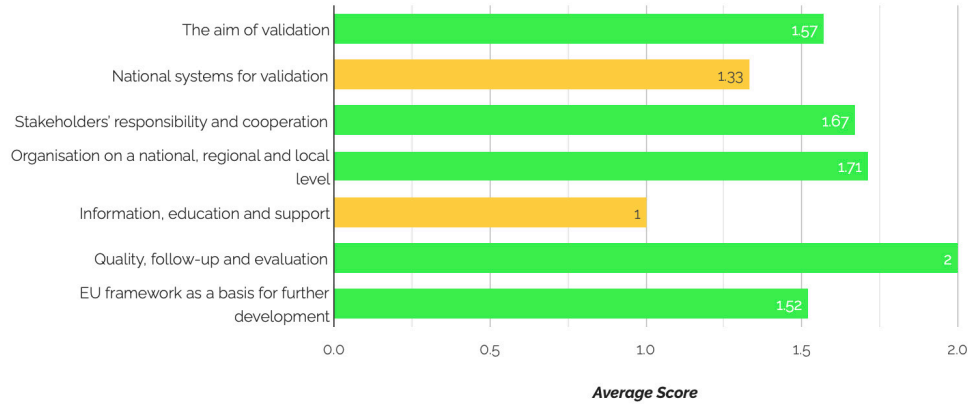
Completely true

N/A

Not applicable

Collaboration, e.g. in the form of developing standards and competence taxonomies, leads to increased consensus and transparency between education and working life.

Evaluate VPL Policies and Practices

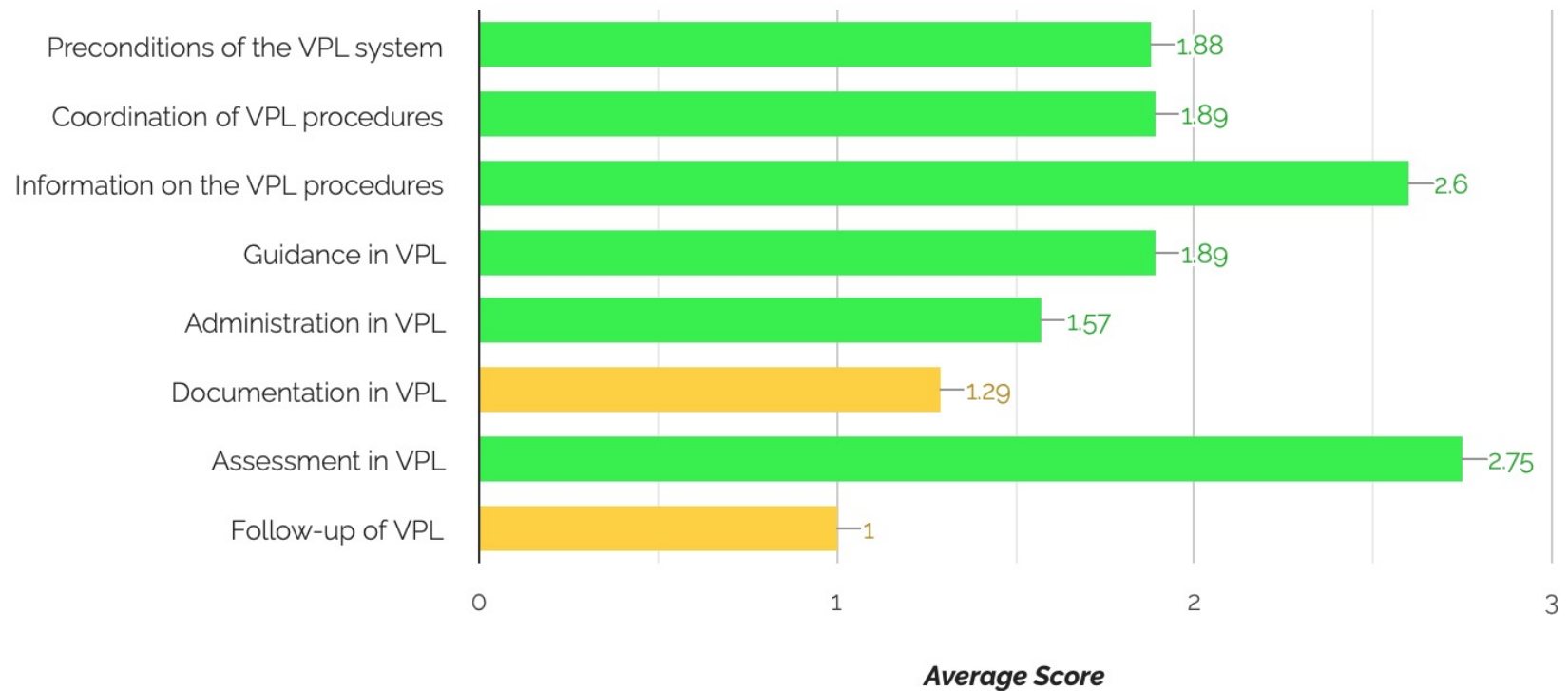


Evaluate VPL Policies and Practices

The aim of validation

The individual decides on validation and on the aspects that serve the individual's purpose the best: identification, documentation, assessment and certification.	2
VPL is implemented in order to strengthen the individual's motivation and opportunities to actively take part in a democratic society (empowerment).	1
The main objectives of VPL are: access to and individualization/personalization of education, and the strengthening the individual's opportunities on the labour market.	2

Evaluate Your VPL Procedures

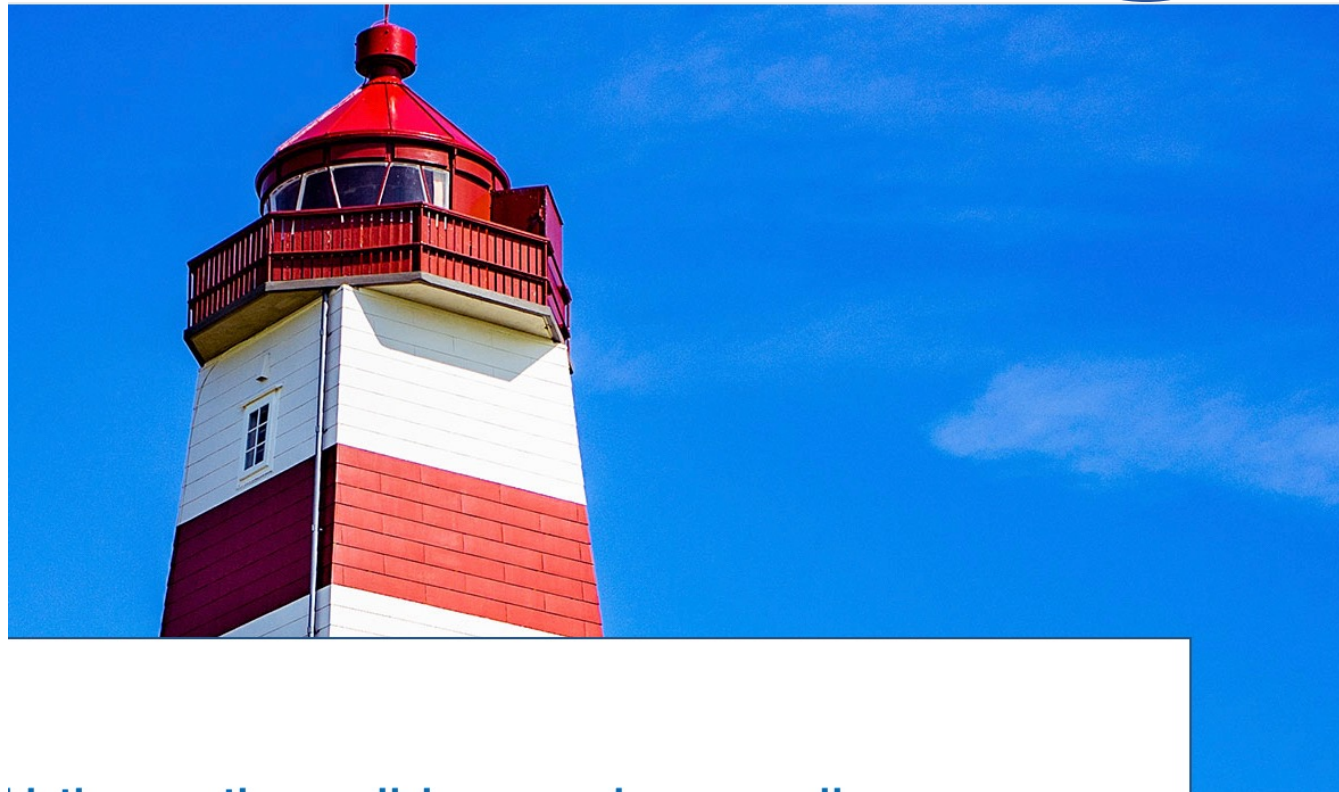


qualitycompass.eu

English ▾

My submissions

Log in



Create new account



[Log in](#) [Create new account](#) [Reset your password](#)

Email address

1

≠

Username*

2

Locale settings

Time zone

Paris



3

Create new account

Nordic Quality Compass on Validation of Prior Learning

A welcome message with further instructions has been sent to your email address.

Follow the link in the email and set your password!
Note: Be careful with automatically saved password + email,
as Username for login cannot be the email!...

Discussion

- Are the tools relevant and useful in your context?
 - Some or all of them?
- If so, how could you promote and apply them?
- Possible improvements?
- Your own questions and reflections!

- Log in and explore the tools!

Discussion

- Are the tools relevant and useful in your context?
 - Some or all of them?
- If so, how could you promote and apply them?
- Possible improvements?
- Your own questions and reflections!



Nordic Network for
Adult Learning

Thank you for participating!

**NORDIC
NETWORK**
for Adult Learning